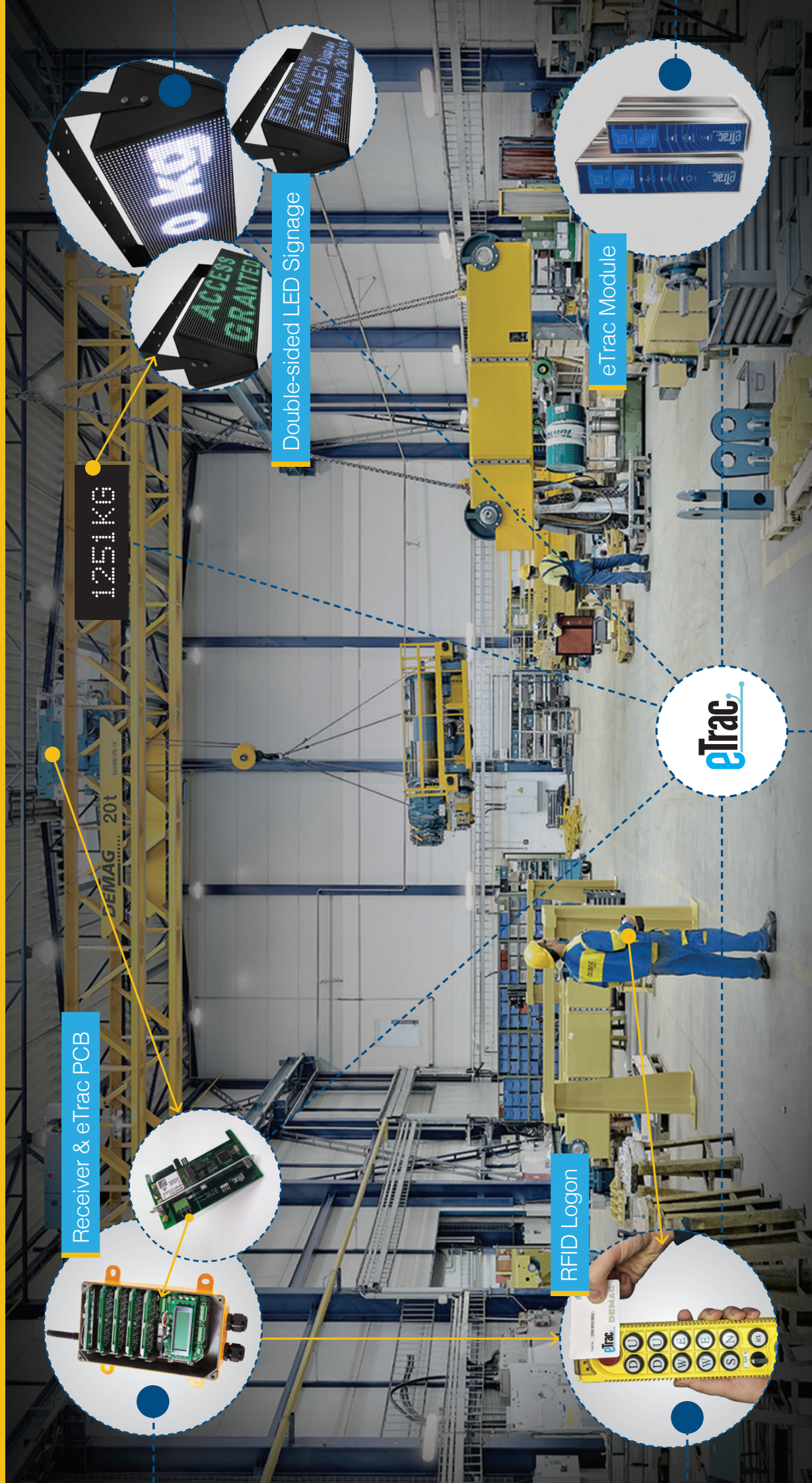


Intelligent Cranes

POWERED BY **eTrac,** & **alpha**

**Where Crane Engineering Meets
Information Technology**



Receiver & eTrac PCB

1251K6

Double-sided LED Signage

eTrac Module

RFID Logon

eTrac

OPERATES

COMMUNICATES

REPORTS

alpha
Engineered products
for industry

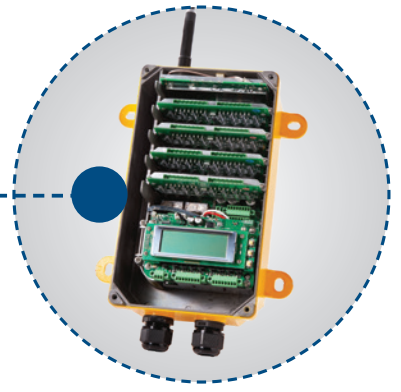
Business Systems

eTrac

Intelligent solutions

Receiver & eTrac PCB

- The Alpha 4000 is an advanced industrial remote control capable of a wide range of applications.
- The Receiver has an integrated communications port that allows direct, noise free, information exchange with the eTrac module.
- The eTrac module fits seamlessly into the receiver board slot.
- The Receiver is designed with changeable relay cards to allow for expansion or modification.
- The robust Receiver case is made of a durable cast aluminium alloy that provides mechanical and electrical noise shielding.
- The Alpha 4000 can be used on CAN Bus or contactor control cranes.



RFID Logon

- RFID Logon stops any unauthorised use of your crane.
- Manage crane operators and log how they use the crane.
- The A4000 Transmitter comes in two sizes (8 & 12 button) and is fully customisable.
- All functions of the remote control are set via software.
- Electromagnetic Induction Charging comes standard, charging the Transmitter by simply hooking it onto the battery charger.
- All transmitters have five Status LEDs displaying the current status of the control.



Business Systems

STAFF

- Crane operator performance reports
- Operator Training
- Operator certification management

MAINTENANCE

- DWP reports
- Overload reports
- Crane usage reports
- Dilapidation reporting
- Managing crane maintenance

PRODUCTION

- Assigned crane operators
- Identify crane utilisation
- Incident reporting
- Review movements of crane

FINANCE

- Forecast future capital expenditure
- Benchmarking costs
- Buy or upgrade decision making
- Identify high cost areas



Double-sided LED Signage

- Interactive LED signs
- Programmable display
- User ID displayed - accepted or fail
- Overload display
- Single or double sided
- Dual hoist displaying individual & combined weights
- High Visibility
- Maintenance Free
- Rugged design
- Display size: 192 x 576mm
- Resolution: 32 x 96 = 3072 (Dots)
- Brightness: up to 6500cd/sqm



eTrac Module

- eTrac hardware is used to connect to customer equipment that has no internet intelligence.
- Each component is modular within itself allowing customisation for specific needs whilst also allowing access to common features.
- The eTrac platform is ideally suited to applications which require centralised reporting, monitoring and control of systems and processes at remote sites.
- Administrative control is provided through a web-based interface while other components include electronic hardware, client / server software modules and databases.

Intelligent Crane Solutions



eTrac is a web based solution that allows the seamless integration of data supporting **Predictive Manufacturing Systems (PMS)** and **Intelligent Maintenance Systems (IMS)**. Crane specifications and information is stored in the eTrac system and fed real time data from the eTrac and Alpha control & sensor modules.

This data is compiled into dashboards for the transparent reporting of factory crane life and **Overall Equipment Effectiveness (OEE)**, cutting costs and improving production.

Data history retention then allows the use of **'Prognostics'**, predicting the time at which a component will no longer perform its intended function, to forecast maintenance requirements & costs.

H/R departments can **monitor staff certifications and training** to meet OHS requirements across the company. The Alpha 4000 RFID Logon system allows managers to only allocate certified operators on their cranes.

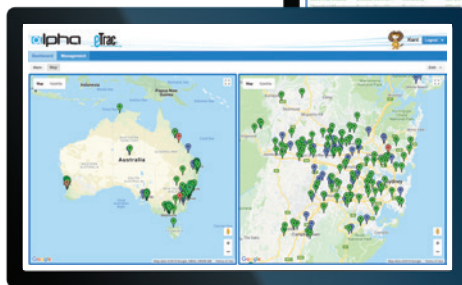
Crane operator performance can be logged to identify repeated incidents that may require further training.



eTrac supports **Administrative and hierarchical access control** allowing different data views for different roles.



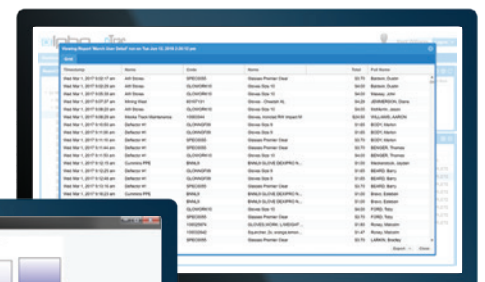
Real time monitoring gives production and maintenance managers a view of what's happening across the factory floor. Special events can also trigger SMS or Email notifications if required.



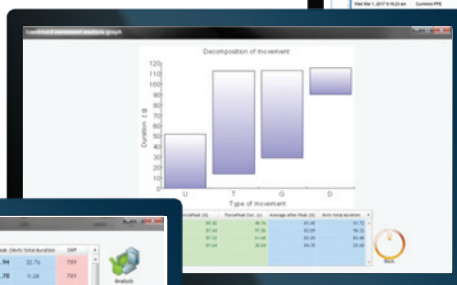
The eTrac Web based platform can **view sites from any location** at any time on most portable devices. The Dashboards are customisable so that companies can view data in different formats that will be informative to the intended user.

Production managers are able to **see which cranes are active or having incidents**. Markers can highlight which locations are in need of attention or reporting.

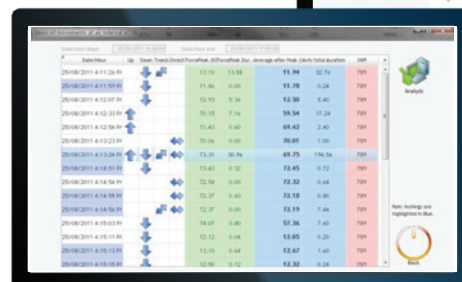
The recorded data can also provide **customisable printed reports** that can be scheduled for specific periods and allocated within the hierarchical structures set by your company.



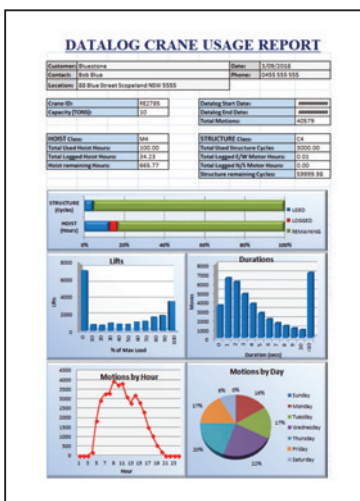
Reports can also be made on demand due to incidents or status requests.



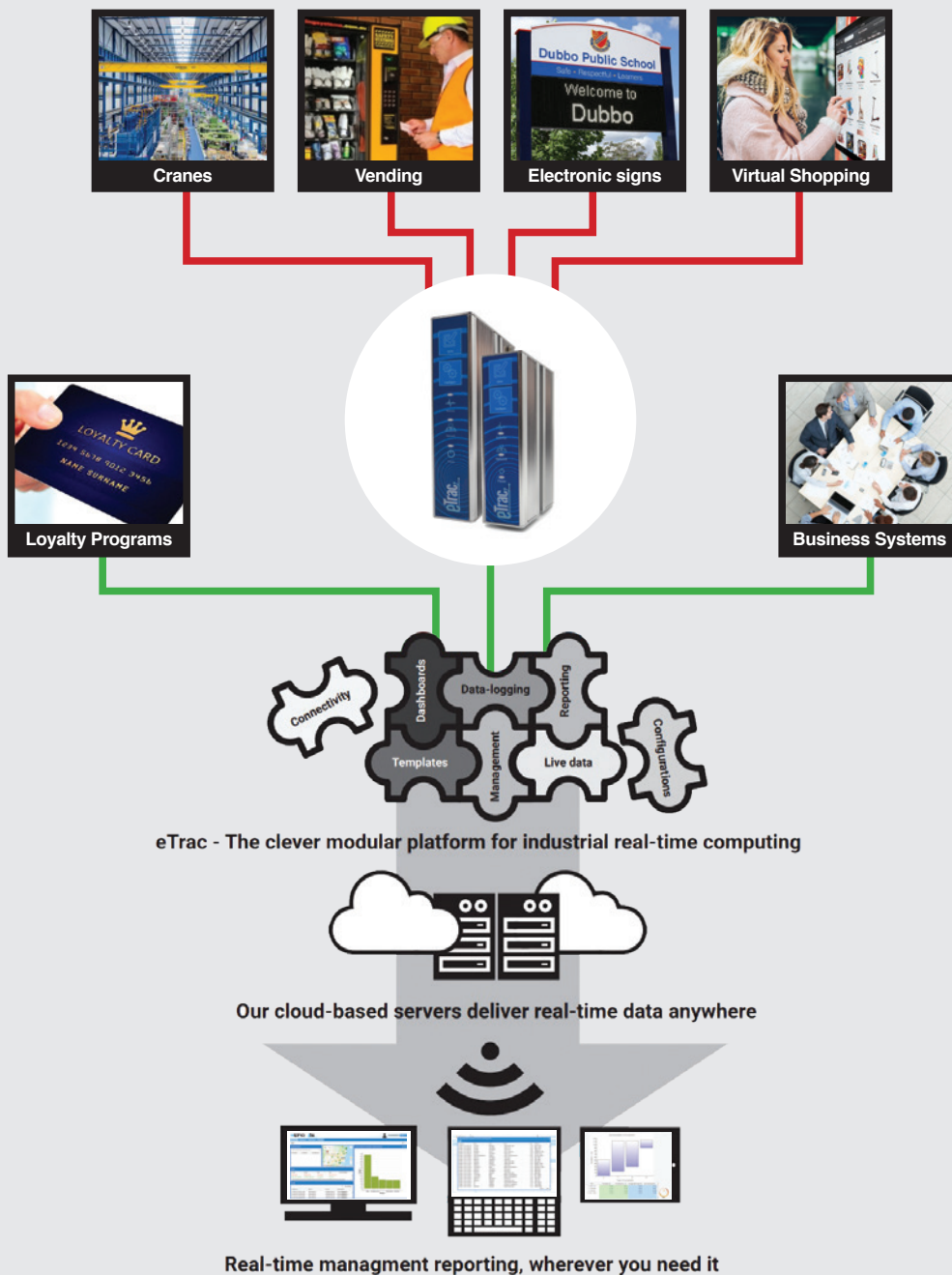
Incident reports allow the user to select a snapshot in time and **review how the incident occurred** according to the captured data.



Design Working Period (DWP) reports are designed to meet Australian standards AS1418.1 AS2550. For existing cranes a Dilapidation Survey is required to determine the "remaining life" of the crane, the eTrac platform will then monitor any future use. Financial managers are then able to seek future capital expenditure budgets for refurbishment or replacement.



The eTrac Platform



emCONTROLS

HEAD OFFICE: Unit 5, 19 Daniel Street, Wetherill Park NSW 2164

R&D OFFICE: Unit 221, 14 Lexington Drive, Bella Vista NSW 2153

P: (02) 9046 0600 | **E:** info@emcontrols.com.au